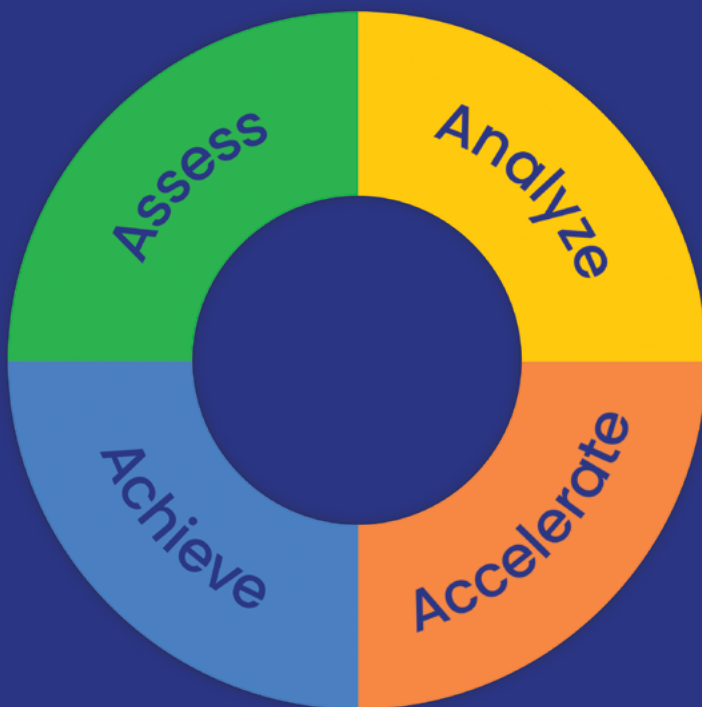




Avant Language Assessment and Professional Learning Solutions

Helping you create a brighter future
through the magic of language



avantassessment.com
[@avantassessment](https://twitter.com/avantassessment)



Test with Accuracy and Reliability

Having established the world's first online language proficiency assessment over two decades ago, Avant still delivers the **ST**Andards-based **M**easurement of **P**roficiency (STAMP) and other assessment solutions in 50+ languages. Avant applies rigorous standards and rating quality checks to achieve a high degree of accuracy and reliability. We can help you select assessments tailored to your program's specific needs and testing purposes.



STAMP 4S

4-skills assessment
for teenagers and adults



STAMP 4Se

4-skills assessment
for ages 12 and below



STAMP WS

2-skills assessment
for teenagers and adults



STAMP WSe

2-skills assessment
for ages 12 and below



STAMP for CEFR

4-skills language assessment
aligned to CEFR



STAMP Pro

4-skills assessment for
professionals and businesses



STAMP Monolingual

4-skills assessment with
instructions in testing language



STAMP Medical

4-skills assessment
for the medical field



STAMP for ASL

2-skills American Sign
Language assessment



Assess

Avant STAMP Test Design

How does STAMP Individualize Assessment for Each Student?

Avant STAMP dynamically adjusts the difficulty of test questions based on the test taker's responses. Unlike fixed-form tests, where every test taker answers the same questions, Avant STAMP tailors the test to the individual's ability level in real-time, providing a personalized experience.

How does it work?

Avant employs a *multi-stage adaptive test design*. Each Avant STAMP test starts with a series of questions at the Intermediate level.



As test takers progress through the test, they are routed to more advanced or novice questions based on their answers.

This allows for **better measurement precision and a better test-taking experience**. Contrary to what happens with a linear test, test takers will come across very few items that are either too easy or too difficult for them.

The proficiency level achieved at the end of the **Reading section informs the prompts for the Writing section**.

Similarly, the proficiency level achieved at the end of the **Listening section informs the prompts for the Speaking section**.

In the case of Avant STAMP WS, test takers perform a self-evaluation through a series of CAN-DO statements of Reading and Listening to determine the prompt levels for Writing and Speaking.

Why Choose Computer-Adaptive Testing Over Fixed-Form Testing?

1. Precision and Efficiency

- Adaptive questioning
- Accurate measurement

2. Enhanced Test

Taker Experience

- Reduced test anxiety
- Shorter testing time

3. Data-Driven

Insights

- Real-time feedback
- Detailed reporting



PLACE

Language Placement Test for teenagers and adults



APT

Modern Standard Arabic proficiency test for native speakers



SHL

Spanish Heritage Language Test for heritage programs



STAMP for Latin

1-skill Latin assessment



KEY



READING



WRITING



LISTENING



SPEAKING



RECEPTIVE



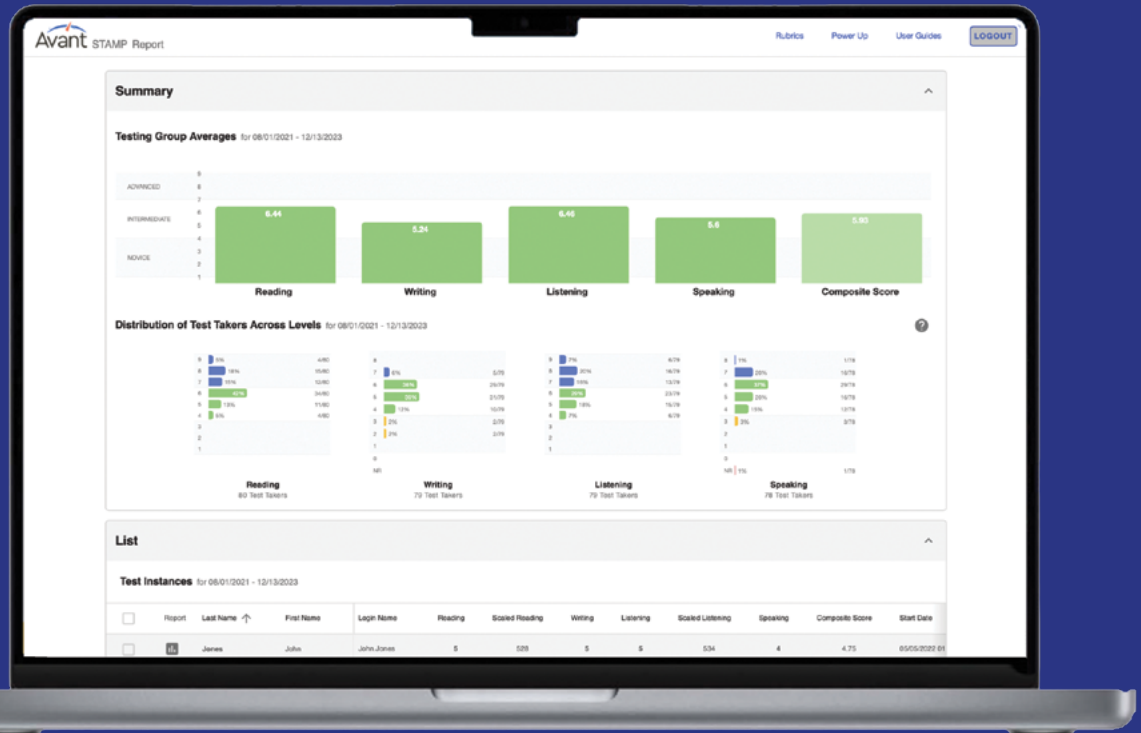
EXPRESSIVE

Report

with Validity and Accountability

Informed Decision Making

- Access all results online in a single dashboard
- Perform detailed longitudinal analysis
- Identify growth areas and personalize instruction
- Helps set individual student, class, and program goals and benchmarks



- Discover professional learning needs
- Demonstrate program quality

Avant MORE Learning will customize data dive sessions to help you inform instruction and articulate program goals!

Personalized Learning

This one-page report provided after completing the STAMP test is packed with information, providing insights into a test taker's performance in each skill assessed as well as providing recommendations to "Power Up" language proficiency to the next level.

Testing is available on both the CEFR and ACTFL proficiency scales.

Analyze

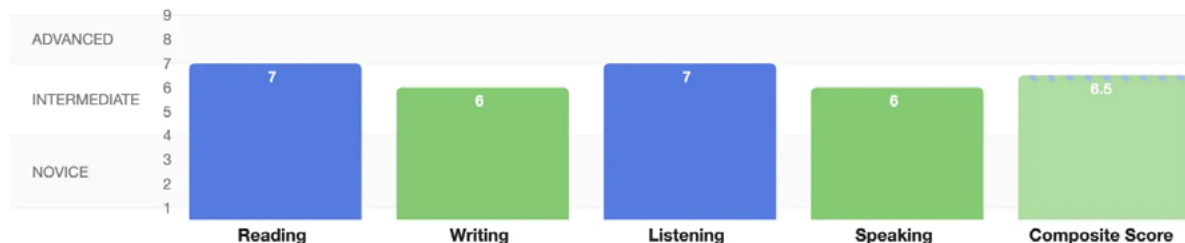
Avery Costello

District | School

Login Name: avery.costello@unrealschool.com

Language: Spanish

Start Date: June 03, 2023



READING	LEVEL DESCRIPTION	SUGGESTIONS
<p>7 ADVANCED LOW</p>	<p>At this level, learners are able to:</p> <ul style="list-style-type: none"> understand narratives and reports concerned with issues in which the writers adopt particular attitudes or viewpoints. understand the subtleties of texts on familiar topics and information from texts on unfamiliar topics. 	<p>Suggestions to 'Power Up' to the next level:</p> <ul style="list-style-type: none"> practice reading a variety of extended texts such as complex narratives, speeches, and poetry with author intended inferences and nuance. *Latin: focus on reading poetry, extended dialogues, and classical literature. focus on building depth of vocabulary by studying and learning multiple senses of words, including homonyms and synonyms.
<p>6 INTERMEDIATE HIGH</p>	<p>At this level, learners are able to:</p> <ul style="list-style-type: none"> write clear, detailed, extended texts on a wide range of subjects related to personal interests. create texts that show good control of the language, using a variety of transition and linking words and strategies. show increased grammatical accuracy and vocabulary depth and breadth in texts. 	<p>Suggestions to 'Power Up' to the next level:</p> <ul style="list-style-type: none"> focus on increasing the amount of language that you produce, using a variety of complex sentences with both added details and less common vocabulary. focus on creating cohesion and natural flow in your writing, with clear and smooth flow from beginning, middle and end.
<p>7 ADVANCED LOW</p>	<p>At this level, learners are able to:</p> <ul style="list-style-type: none"> understand reports concerned with contemporary problems in which the speaker or presenter shares particular attitudes or viewpoints. understand some extended presentations on unfamiliar topics delivered through various media sources. 	<p>Suggestions to 'Power Up' to the next level:</p> <ul style="list-style-type: none"> practice listening to longer, more detailed audio passages such as news reports, audio books and reviews with critical opinions. use focused listening to identify personal opinion and critical analysis of stories/situations and to identify idiomatic and nuanced use of language.
<p>6 INTERMEDIATE HIGH</p>	<p>At this level, learners are able to:</p> <ul style="list-style-type: none"> create clear, detailed, extended speeches and presentations on a wide range of subjects. create language that shows good control of the language, using a variety of transition and linking words and strategies. show increased grammatical accuracy and vocabulary depth and breadth in language, with natural flow and speed. 	<p>Suggestions to 'Power Up' to the next level:</p> <ul style="list-style-type: none"> focus on increasing the amount of language that you produce, including a variety of complex sentences, added details and idiomatic language. focus on creating cohesion and natural flow in your speaking, with clear and smooth flow from beginning, middle and end.



Workshops and Coaching

Our team of experts will customize workshops and coaching experiences to help you analyze test results and build data-informed instructional practices. Topics may include leadership development, effective strategies for increasing proficiency and demonstrating program growth and accountability. We have expertise in world language, multilingual learning, and dual language/bilingual education programs.

Dual Language Immersion Support

Avant MORE Learning's MORE Effective Dual Language Immersion (MEDLI) team supports DLI/Bilingual programs of all types with instructional support, coaching, and professional learning. Our expert DLI team has first-hand experience in developing and growing programs at each stage.

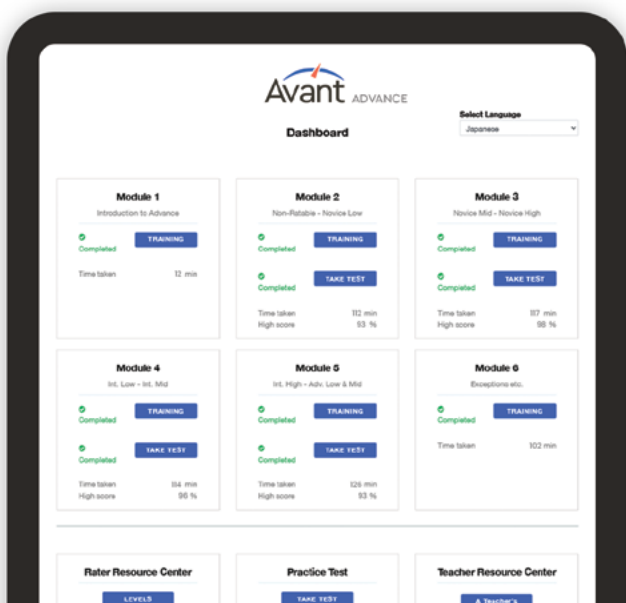


Avant ADVANCE Proficiency Guidelines Training

Avant ADVANCE, our online teacher training tool, boosts confidence in accurately scoring student writing responses:

- Self-paced with immediate feedback
- Practice rating student responses
- Helps set goals and proficiency targets

Pair this course with our ADVANCE Together workshop to supercharge your team's understanding of proficiency standards.



Build Pathways to Higher Education and Careers



Credit by Exam

Create opportunities for language learners to receive recognition for their skills learned in or out of the classroom. Avant's assessments are used to award credit by exam at the secondary and post-secondary levels.



Global Seal of Biliteracy

The Global Seal of Biliteracy is a free, digitally shareable credential that has been issued in over 60 countries by schools, universities, and employers. Avant STAMP and APT are Global Seal qualifying tests.



State Seals of Biliteracy

Celebrate your learners' language skills with State Seals of Biliteracy. Avant STAMP tests qualify in all 50 states and the District of Columbia.



College Credit

Inspire learners to continue their language acquisition journey by giving them a head start toward a college minor or major. Avant STAMP tests are recommended for college credit by the American Council on Education (ACE).

You're in Good Company



Anchorage School District
Educating All Students for Success in Life



**Arlington
Public
Schools**



**SINGAPORE
AMERICAN
SCHOOL**



NEW MEXICO
Public Education Department



Exclusive Member Benefits



bit.ly/AATSPavant



bit.ly/AATGavant

Avant

Prefer a digital version?
Scan here to download the
Digital Brochure:



info@avantassessment.com

avantassessment.com



[@avantassessment](https://www.instagram.com/avantassessment)

©2024 Avant Assessment, LLC | v.2024-1